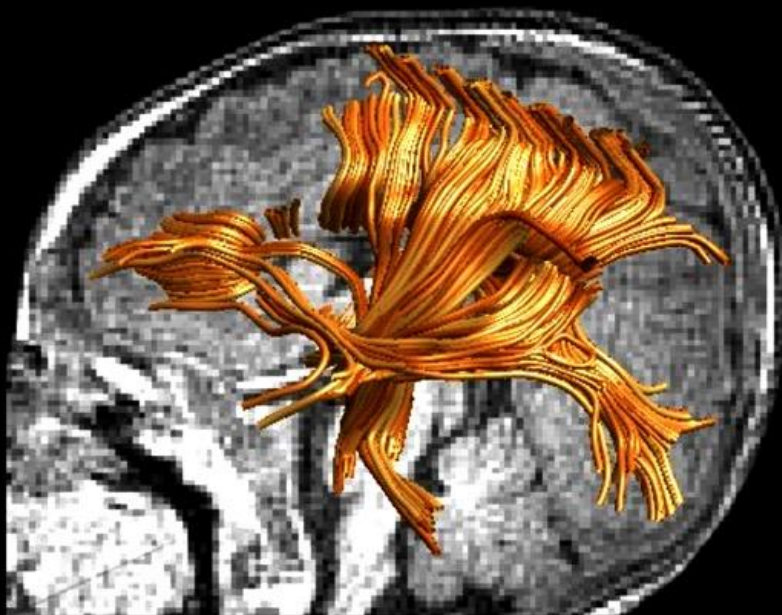


**WATER FOR
WELLBEING**
FROM FRAMEWORK
TO ACTION

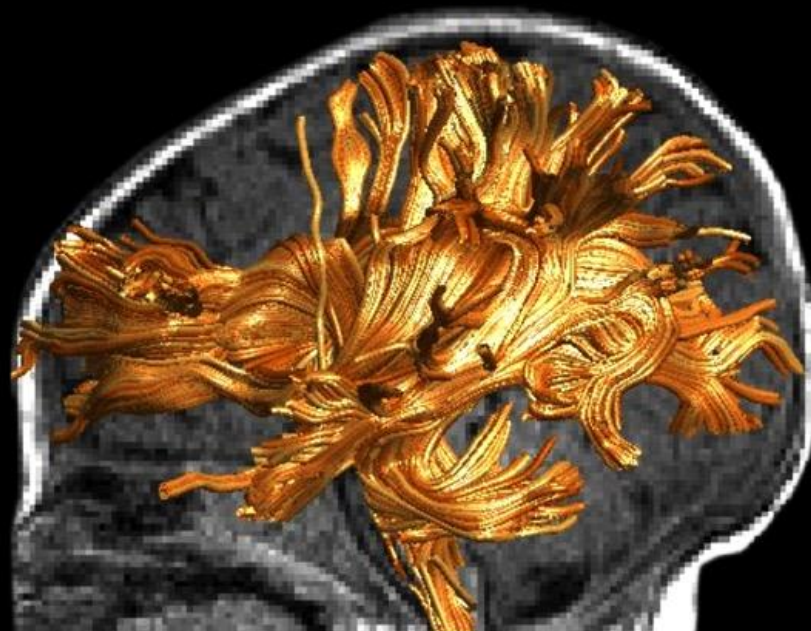
STOCKHOLM
WORLD WATER
WEEK
2018

THE FIRST 1,000 DAYS

LAY A LIFELONG FOUNDATION
FOR HUMAN CAPITAL



CHILD WITH STUNTED BRAIN
DEVELOPMENT



HEALTHY, CARED FOR CHILD

FOURTH INDUSTRIAL REVOLUTION

COMPETING IN THE
NEW ECONOMY



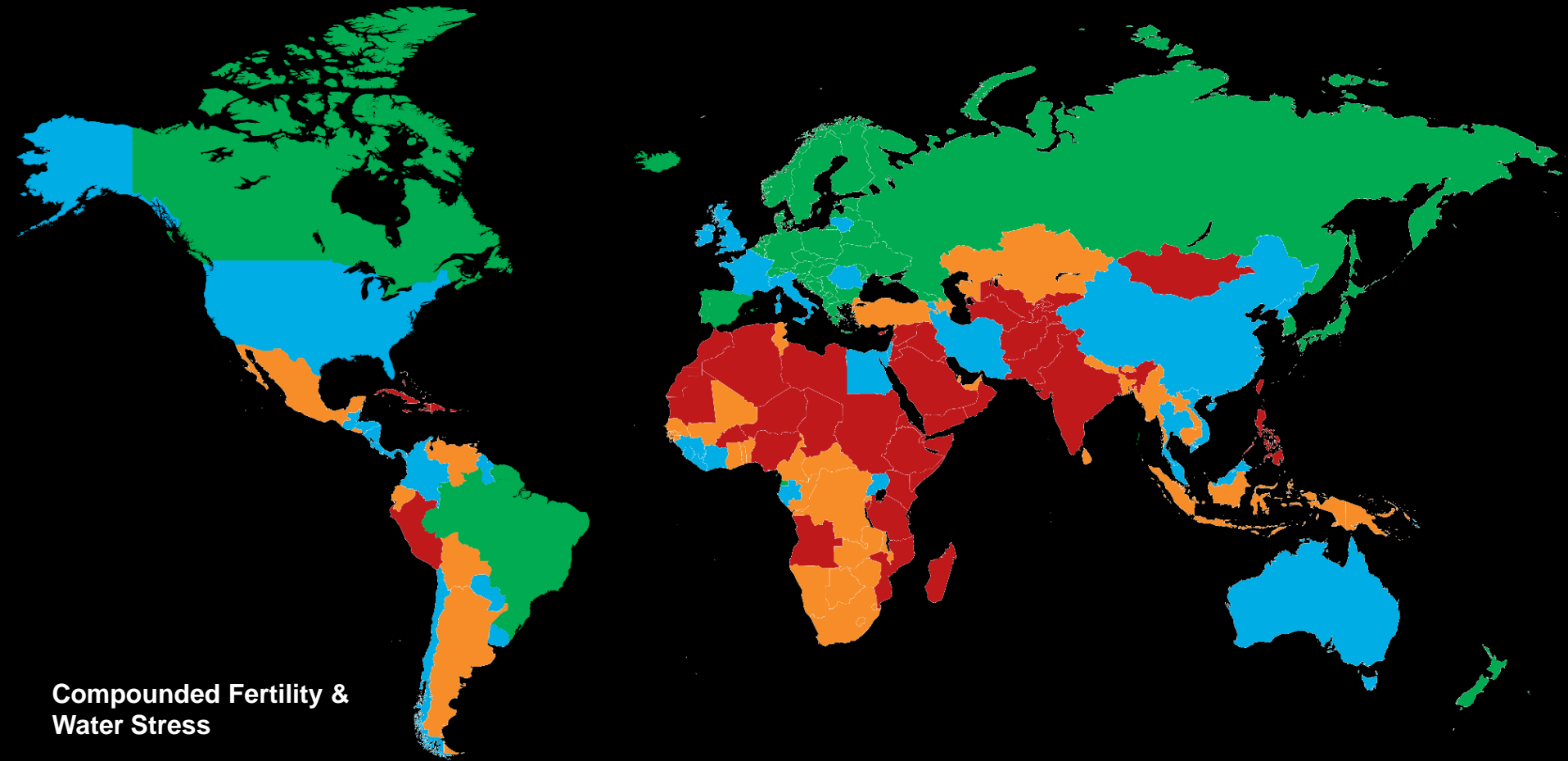
156 MILLION
CHILDREN UNDER 5
ARE STUNTED WORLDWIDE

>30% **20-30%**

Number of children, by region (1990-2014)

Source: UNICEF-WHO-World Bank 2015

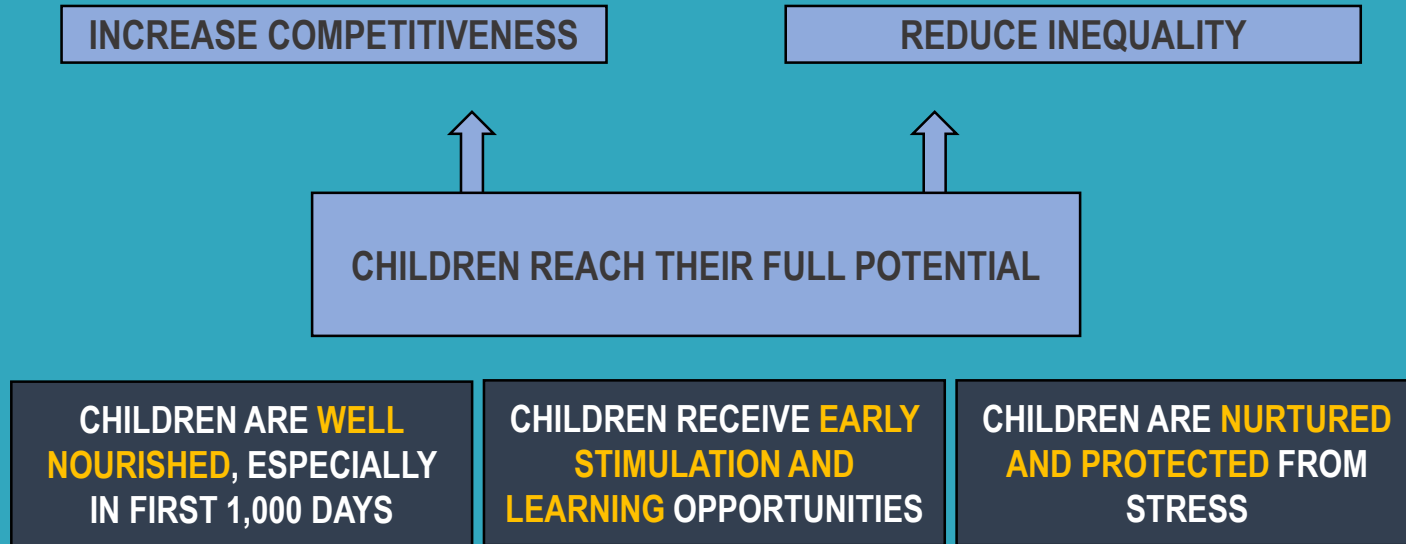
Per capita Water Availability and Future Population Growth, 2050



Compounded Fertility & Water Stress

- Low (no) Risk
- Medium Risk
- High Risk
- Very High Risk

INVESTING IN THE EARLY YEARS TO END EXTREME POVERTY AND BOOST SHARED PROSPERITY



DELIVERING ON THE ESSENTIAL INTERVENTIONS ABOVE REQUIRES EFFORTS ACROSS SECTORS



KEY PRINCIPLES

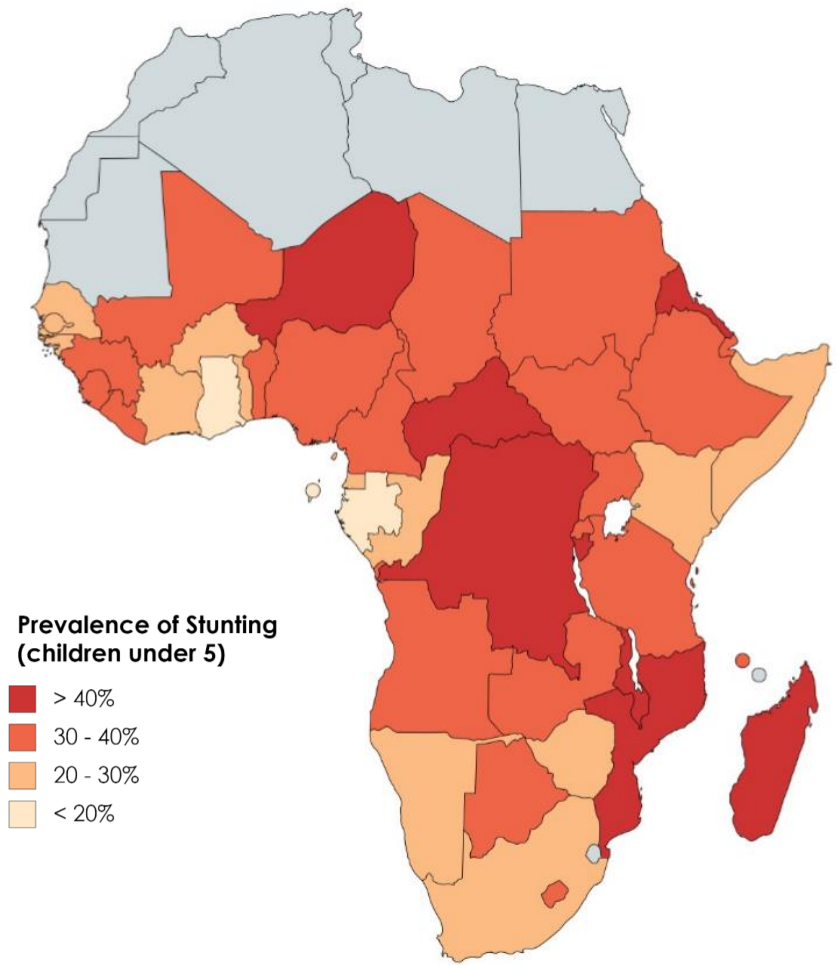
TO ENHANCE IMPACT OF WATER ON
EARLY CHILD OUTCOMES:

- ✓ IMPROVE QUALITY
OF SERVICES
 - ✓ INCLUSION
VULNERABLE GROUPS AND
POPULATIONS
 - ✓ CONVERGENCE
NUTRITION-SPECIFIC AND
NUTRITION-SENSITIVE
 - ✓ GO BEYOND
WATER SUPPLY AND SANITATION
-

8 years



EARLY YEARS FOCUS COUNTRIES WITH WASH OPERATIONS



Theory of Change for Multi-sectoral Convergence to Reduce Stunting in Lao PDR

Impact	Reduced Stunting				
Outcomes	<ul style="list-style-type: none"> <input type="checkbox"/> Improved access to and use of quality health and nutrition services <input type="checkbox"/> Improvement in nutrition related behaviors known to reduce stunting <input type="checkbox"/> Improved access to basic services, including clean water and sanitation <input type="checkbox"/> Increased coverage and quality of early childhood education services 				
Inputs/ Interventions	Health & Nutrition: <ul style="list-style-type: none"> <input type="checkbox"/> Coverage & quality of maternal, neonatal & child health services <input type="checkbox"/> Develop integrated national nutrition strategy <input type="checkbox"/> Social & Behavior Change communication 	Social Protection: <ul style="list-style-type: none"> <input type="checkbox"/> Conditional Cash transfers to target beneficiaries <input type="checkbox"/> Incentivize use of health and nutrition services <input type="checkbox"/> Social & Behavior Change communication 	Water & Sanitation: <ul style="list-style-type: none"> <input type="checkbox"/> Provide access to improved water & sanitation <input type="checkbox"/> Target incentives for toilet construction <input type="checkbox"/> Sanitation in schools & health centers <input type="checkbox"/> Social & Behavior Change communication 	Poverty Reduction Fund: <ul style="list-style-type: none"> <input type="checkbox"/> Support communities to access to basic services <input type="checkbox"/> Promote nutrition sensitive livelihood activities 	Education: <ul style="list-style-type: none"> <input type="checkbox"/> Improve access to basic services <input type="checkbox"/> Promote nutrition sensitive livelihood activities
Guiding Principles	<ul style="list-style-type: none"> <input type="checkbox"/> Focus on high stunting districts and on vulnerable and poor households <input type="checkbox"/> Geographic convergence of nutrition-specific and nutrition-sensitive interventions in the same communities and households <input type="checkbox"/> Common Social Behavior Change Communication (SBCC) strategy, action plan & tools <input type="checkbox"/> Leveraging each other's delivery platforms, for example pre-established community structures <input type="checkbox"/> Exploring possibilities for common monitoring and evaluation frameworks 				

